



CATALOG NUMBER	
PROJECT NAME	TYPE
VOLTAGE	LAMPS

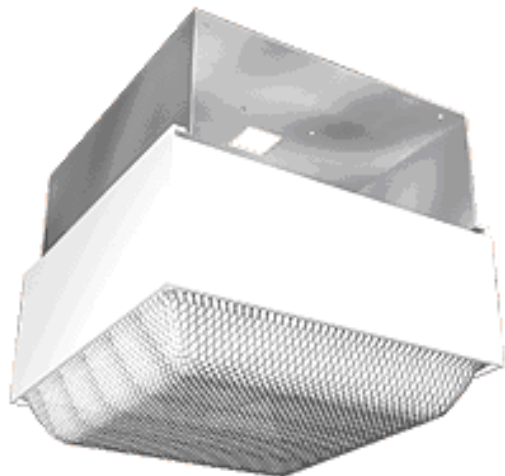
ARCTIC **ICETRON fixture**

SPECIFICATIONS

- Lightweight aluminum construction (weighs less than 20 pounds)
- Compact designs
- 16" x 16" x 8" - One lamp
- Sealed for dust free and damp locations
- Ceiling mount, pendant mount or made to fit in a grid system

APPLICATIONS

- Warehouse
- Retail
- Distribution
- Manufacturing Plant
- Parking Garage
- Hard to maintain areas



ORDERING GUIDE:

ICE

-

100

-

6in

SERIES

- ICE - ARCTIC SERIES

LAMP TOTAL

- 70W BALLAST - (6,500 LUMENS)
- 100W BALLAST - (8,000 LUMENS)
- 150W BALLAST - (12,000 LUMENS)

BRACKET HEIGHT

- SPECIFY HEIGHT



CATALOG NUMBER	
PROJECT NAME	TYPE
VOLTAGE	LAMPS

MOUNTING OPTIONS

- Slide on Bracket for surface mounting. Specify Height

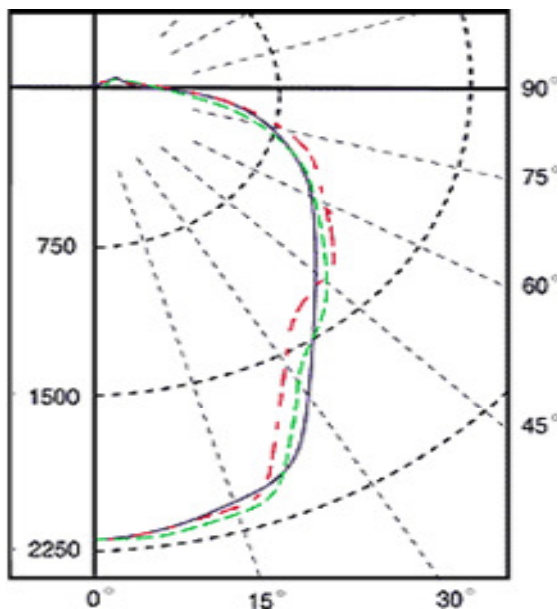
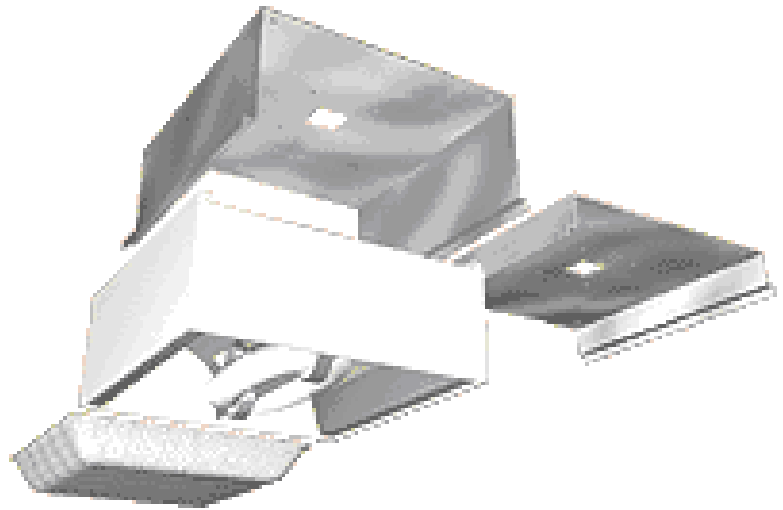
DIMENSIONS

- Fixture Length: 16"
- Fixture Width: 16"
- Fixture Depth: 8"

MAINTENANCE

- 100,000 hour life
- 70 watt, 100 watt or 150 watt available
- Instant on / instant re-strike
- White light - minimal color shift over life
- 70% lumens maintenance at 60,000 hours
- Negative 40° minimum start up temperature

ARCTIC **ICETRON fixture**



Luminaire Properties

Number of Lamps	1
Lamp Lumens	8000
Input Watts	105
Distribution	Direct
Symmetry	Quadrilateral
Photometric Type	Type C
Luminous Shape	Rectangle
Units	Feet
Luminous Dimensions:	
0-180 Axis	1.2
90-270Axis	1.2
Height	0.18

Zonal Lumen Summary

Zone	Lumens	% Lamp	% Fixture
0-30	1645	21	26
0-40	2573	32	40
0-60	4436	55	69
0-90	6089	76	95
90-120	278	3	4
90-150	325	4	5
90-180	325	4	5
0-180	6414	80	100