



Industrial Lighting Products

CATALOG NUMBER	
PROJECT NAME	TYPE
VOLTAGE	LAMPS

# WRAP

## T8 and T5HO

### **SPECIFICATIONS**

- Specification grade for new construction.
- Multiple lamp and ballast options
  - T5 HO or T8
  - Super T8 High efficiency
- Suitable for continuous runs
- Die formed steel housing
- Surface mount or suspended
- Ample KOs on back and ends.
- Prismatic wrap around lens
- Wire Wrap option available on narrow fixture
  - Wire cage replaces prismatic lens



### **APPLICATIONS**

- Hallways
- Offices
- Multi purpose
- Work station task lighting

### **ORDERING GUIDE:**

**FWS** / **1084** / **E** / **T8/L** / **T8/L**

SERIES	LAMP TOTAL	REFLECTOR	BALLASTS	OPTIONS
<input type="checkbox"/> FWM - MEDIUM WRAP	<input type="checkbox"/> 1022 - 2 FT 2 LAMP	<input type="checkbox"/> N - WHITE BALLAST COVER (STEEL)	<input type="checkbox"/> T5/H - T5HO	<input type="checkbox"/> WW - WIRE WRAP
<input type="checkbox"/> FWW - WIDE WRAP	<input type="checkbox"/> 1023 - 2 FT 3 LAMP	<input type="checkbox"/> E - 95% ENHANCED REFLECTOR	<input type="checkbox"/> T8/L - T8 LPF	<input type="checkbox"/> BB - BATTERY BACKUP
<input type="checkbox"/> FWN - DEEP NAR-ROW WRAP	<input type="checkbox"/> 1042 - 4 FT 2 LAMP	<input type="checkbox"/> W - 91% WHITE REFLECTOR	<input type="checkbox"/> T8/N - T8 NPF	
	<input type="checkbox"/> 1043 - 4 FT 3 LAMP		<input type="checkbox"/> T8/H - T8 HPF	
	<input type="checkbox"/> 1082 - 8 FT 2 LAMP		<input type="checkbox"/> SPECIFY BRAND:	
	<input type="checkbox"/> 1084 - 8 FT 4 LAMP			
	<input type="checkbox"/> 1086 - 8 FT 6 LAMP			



Industrial Lighting Products

CATALOG NUMBER	
PROJECT NAME	TYPE
VOLTAGE	LAMPS

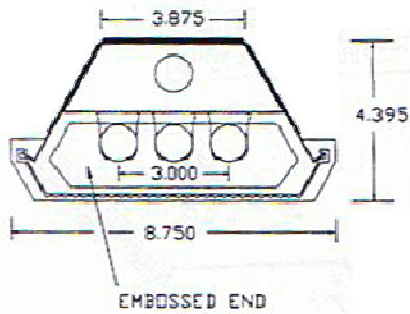
## MOUNTING OPTIONS

- Surface Mount
- Pendant
- Dual Point

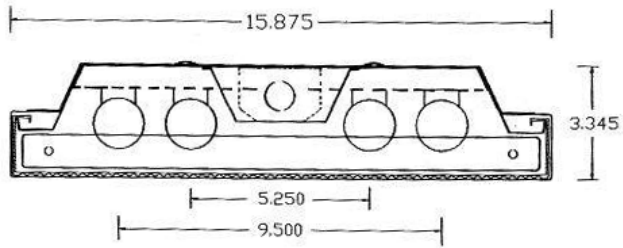
## WRAP

## T8 and T5HO

### FWN



### FWW



### FWM

